

waterpik®
waterflosser™

Congratulations!

You are now on your way
to better oral health!

✓ Register and Save

Register your product at
*waterpik.com/registration to receive over **\$50**
in savings (includes **50%** off your next order of
assorted tips + tip storage case)

*For Canadian customers, register at
waterpik.ca/registration.

✓ Write a Review

Creating innovative Waterpik® products
that inspire better oral health is our
passion. We invite you to *leave a review
by sharing your thoughts about this
Water Flosser on waterpik.com or the
retailer's website.

*US customers only

✓ We're Here to Help

We hope you are loving your new Water Flosser.
If for any reason you are not satisfied or have
any product questions, please contact our fast
and friendly Customer Service Team based in
Fort Collins, Colorado. This Water Flosser is
backed by a 2-year manufacturer's warranty.

Call: 1-800-525-2774 (USA)
1-888-226-3042 (CAN)
Monday-Friday
7 am - 5 pm MST

Chat or E-mail
service@waterpik.com



**Quick Start
Guide Inside!**



Register and Save!

Save over \$50!

Register at ***Waterpik.com/Registration**
to receive exclusive discount code.

*For Canadian customers, register at
waterpik.ca/registration

Offer includes
50% OFF
your next order
of assorted
tips + tip
storage case.



We'd Love to Hear from You!



Connect with Us
@[Waterpik](https://twitter.com/Waterpik)



Call: 1-800-525-2774 (USA) 1-888-226-3042 (CAN)
www.waterpik.com www.waterpik.ca

Waterpik® 14 Day Challenge App



Make water flossing a habit! Try our new mobile App
for the best water flossing experience.



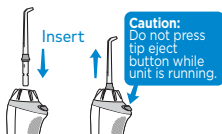
Quick Start Guide

GETTING STARTED

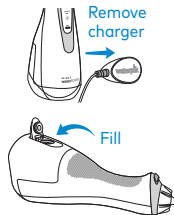
- 1** Connect the charger cord to a user supplied Type-A USB charger that is rated for 5 VDC @ 1A . Plug the USB-charger into the wall outlet, connect the magnetic charger to the unit, and charge for approximately 4 hours.



- 2** Press tip firmly into unit until it clicks into place. To remove tip, push the tip eject button.



- 3** Remove magnetic charger from unit prior to filling with water and during use. Lift the flip top on reservoir and fill with lukewarm water. Refill as needed.



WATER FLOSS

- 4** With unit **OFF**, use **MODE** button to select **LOW** pressure. Place tip in mouth. Press **POWER** button once to start flossing. Press the **MODE** button to adjust pressure settings.



- 5** Lean over sink. Close lips enough to prevent splashing. Keep unit upright during use to ensure continuous water flow.



TECHNIQUE

- 6** Aim water at the gumline at a 90 degree angle. Follow the gumline and pause briefly between teeth.



NEED HELP?

Visit Waterpik.com/WelcomeWF
To watch a How To Video and find additional product support.

Call Us! **1-800-525-2774 (USA)**
1-888-226-3042 (CAN)