

waterpik

Congratulations!

You are now on your way to better oral health!

REGISTER AND SAVE

Register your product and receive over \$50 in savings. waterpik.com/registration

WE'RE HERE TO HELP

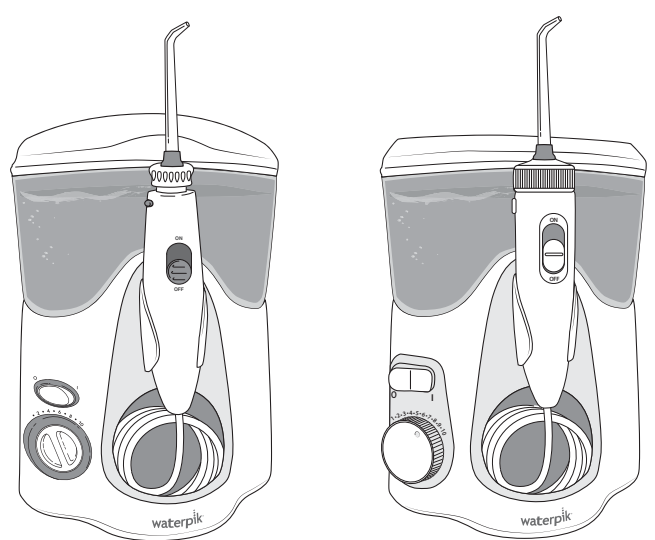
We hope you are loving your new Water Flosser. If for any reason you are not satisfied or have any product questions, please contact our fast and friendly Customer Service Team based in Fort Collins, Colorado.



Call: 1-800-525-2774
Monday-Friday 7 am - 5 pm MST
Chat or E-mail
service@waterpik.com

INSTRUCTION MANUAL INSIDE →

Waterpik™ Water Flosser Models WP-100 Series



LET US HELP YOU GET STARTED!

We have many helpful tools to provide you with the best possible experience. Scan me to get started or visit waterpik.com/ultra

QUICK START GUIDE INSIDE →

IMPORTANT SAFEGUARDS

READ ALL INSTRUCTIONS BEFORE USING.

- This product is for household use.

When using electrical products, especially when children are present, basic safety precautions should always be followed, including the following:

DANGER:

To reduce the risk of electrocution:

- Always unplug product after using.
- Do not use while bathing.
- Do not place or store product where it can fall or be pulled into a tub or sink.
- Do not place in or drop into water or other liquid.
- Do not reach for a product that has fallen into water. Unplug immediately.
- Do not handle plug with wet hands.
- Check the supply cord and plug for damage before the first use and during the life of the product.

WARNING:

To reduce the risk of burns, electrocution, fire, or injury to persons:

- This appliance is not intended for use by persons (including children) with reduced physical, sensory or mental capabilities, or lack of experience and knowledge, unless they have been given supervision or instruction concerning use of the appliance by a person responsible for their safety.

- Children should be supervised to ensure that they do not play with the appliance.
- Use this product only for its intended use as described in this Quick Start Guide/Instruction Manual or as recommended by your dental professional.
- Never operate this product if it has a damaged cord or plug, if it is not working properly, if it has been dropped or damaged, or dropped into any liquid. Contact Water Pik, Inc. at 1-800-525-2774 or visit www.waterpik.com.
- Do not plug this device into a voltage system that is different from the voltage system specified on the device.
- Keep electrical cord away from heated surfaces.
- Never drop or insert any object into any hose or opening.
- Do not use outdoors or operate where aerosol (spray) products are being used or where oxygen is being administered.
- Remove Water Flosser reservoir to fill. Fill reservoir with warm water or other dental professional recommended solutions only.
- Only use tips and accessories recommended by Water Pik, Inc. and as identified in this instruction manual.
- The supply cord cannot be replaced. If the cord is damaged, the appliance must be scrapped.
- Do not use iodine, saline (salt solution), or water insoluble concentrated essential oils in this product. Use of these can reduce product performance and will shorten the life of the product.

- Do not direct water from the Water Flosser under the tongue, into the ear, nose or other delicate areas. This product is capable of producing pressures that may cause serious damage in these areas.
- This appliance has a polarized plug (one blade is wider than the other). As a safety feature, this plug is intended to fit into a polarized outlet only one way. If the plug does not fit fully into the outlet, reverse the plug. If it still does not fit, contact a qualified electrician. Do not attempt to modify the plug in any way.
- Do not direct water into the nose or ear. The potentially deadly amoeba, *Naegleria fowleri*, may be present in some tap water or unchlorinated well water and may be fatal if directed into these areas.
- If your physician advised you to receive antibiotic premedication before dental procedures, you should consult your dental professional before using this product or any other oral hygiene aid.
- Remove any oral jewelry prior to use of this product.
- Do not use if you have an open wound on your tongue or in your mouth.
- Do not use this product for more than five minutes in each two-hour period.
- If the Pik Pocket™ tip (not included in all models) separates from the shaft for any reason, discard tip and shaft and replace with new Pik Pocket™ tip.
- This product does not contain any user serviceable electrical parts and it does not require maintenance. Do not attempt to open the product.

SAVE THESE INSTRUCTIONS

SYMBOLS							
The following symbols may appear on your product and/or packaging. Some of these symbols may not be relevant in your region and are listed for information purposes only.							
Symbol	Definition	Symbol	Definition	Symbol	Definition	Symbol	Definition
	Refer to instruction manual		Detachable Power Supply		Do not use this device in a shower, bath tub and do not immerse in any liquid.		Regulatory Compliance Mark
	Manufacturer		Direct Current (DC) Voltage		Authorized Representative in the European Community		Separate collection for waste electrical and electronic equipment.
	Ingress Protection Code		Alternating Current (AC) Voltage		CE marking of conformity		
	IEC Class II Equipment		Do not immerse this device in any liquid.		UK Conformity Assessed		

LIMITED 3 YEAR WARRANTY

Waterpik™ Water Flossers have no consumer-serviceable electrical items and do not require routine service maintenance. For all your service needs go to www.waterpik.com. You may also call our toll-free customer service number at 1-800-525-2774. Refer to the serial and model numbers in all correspondence. These numbers are located on the bottom of your unit. Still have questions? Go to www.waterpik.com. For questions or problems please call the customer service center before returning the product. Please do not send your unit to the Water Pik, Inc. address as this can cause lengthy delays. Refer to the serial and model numbers in all correspondence. These numbers are on the bottom of the unit behind the reservoir. Water Pik, Inc. warrants to the original consumer of this new product that it is free from defects in materials and workmanship for 3 years from the date of purchase. **Consumer will be required to submit the original purchase receipt as proof of purchase date and if requested, the entire product, to support a warranty claim.** Water Pik, Inc. will replace the product provided the product has not been abused, misused, altered or damaged after purchase, was used according to instructions, and was used only with accessories or consumable parts approved by Water Pik, Inc. This limited warranty excludes accessories or consumable parts such as tips, batteries, etc.

WATERPIK, INC. DISCLAIMS ALL OTHER EXPRESS OR IMPLIED WARRANTIES TO THE EXTENT PERMITTED BY LAW INCLUDING, BUT NOT LIMITED TO, ALL WARRANTIES OF MERCHANTABILITY AND FITNESS FOR A PARTICULAR PURPOSE. ALL IMPLIED WARRANTIES ARE LIMITED TO THE DURATION OF THIS LIMITED WARRANTY. SOME STATES OR PROVINCES MAY NOT ALLOW LIMITATIONS ON HOW LONG AN IMPLIED WARRANTY LASTS, SO THE ABOVE MAY NOT APPLY TO YOU.

LIMITATION OF LIABILITY

This limited warranty is your sole remedy against Water Pik, Inc. and it shall not be liable for any damages, whether direct, indirect, incidental, special, consequential, exemplary or otherwise, including but not limited to property damage, arising out of any theory of recovery, including statutory, contract or tort.

ARBITRATION

BINDING ARBITRATION AND WAIVER OF RIGHT TO ASSERT MATTERS IN COURT AND RIGHT TO JURY TRIAL

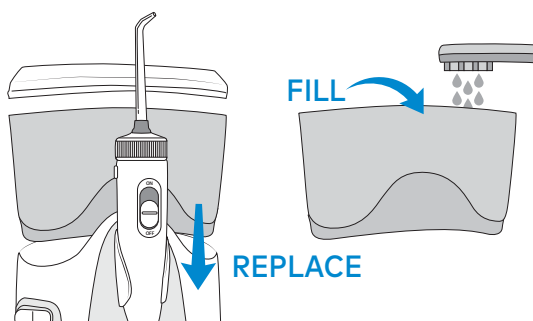
By purchasing, installing, or using this product you agree that any controversy or claim arising out of or relating to your purchase, use, modification, installation, or removal of this product shall be settled by binding arbitration. The arbitrator's decision will be final and binding. Judgment on the award rendered by the arbitrator may be entered in any court having jurisdiction over the matter. Further, you agree that you will not have the right to litigate any claim arising out of or in relation to your purchase, use, modification, installation, or removal of this product in any court or to have a jury trial on that claim. Arbitration of any matters shall be administered by the American Arbitration Association and conducted by one arbitrator in accordance with the consumer arbitration rules of the American Arbitration Association in effect at the time of filing of the demand. The venue for all such arbitrations shall be Colorado and any such arbitration shall be subject to the Federal Arbitration Act and Colorado law.

WAIVER OF RIGHT TO PARTICIPATE IN CLASS ACTIONS OR PURSUE CLAIMS IN A REPRESENTATIVE CAPACITY

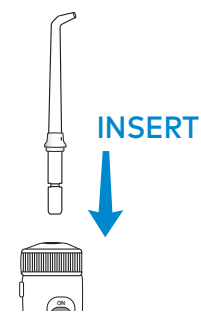
Further, by purchasing, installing, or using this product you agree that arbitration must be on an individual basis. This means neither you, nor we, may join or consolidate claims in arbitration by or against other purchasers or users of Water Pik, Inc. products or the general public. Additionally, you may not litigate in court or arbitrate any claims as a representative or member of a class or in a purported representative capacity on behalf of the general public, other purchasers or users of this product, other persons or entities similarly situated, or in a private attorney general capacity.

Quick Start Guide

- Remove the reservoir, lift the reservoir lid, and fill with warm water. Replace the reservoir over the base and press down firmly and replace the lid.

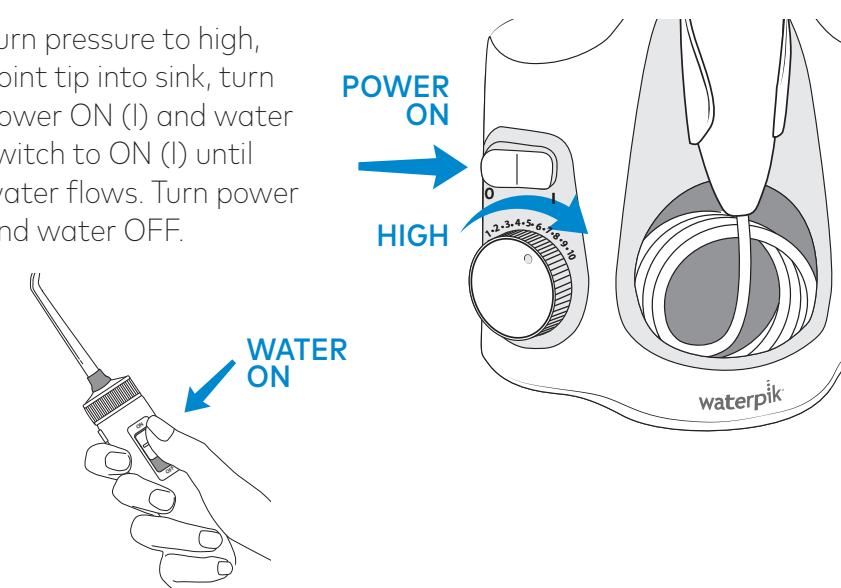


- Insert tip firmly until it clicks into place. To remove tip, push the tip eject button.



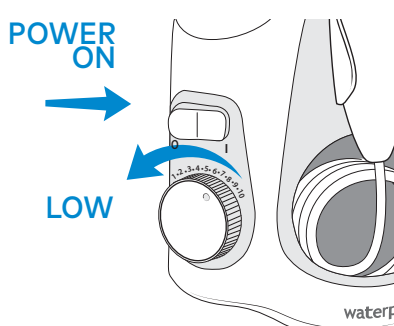
PRIMING UNIT (FIRST TIME USE ONLY)

- Turn pressure to high, point tip into sink, turn power ON (I) and water switch to ON (I) until water flows. Turn power and water OFF.



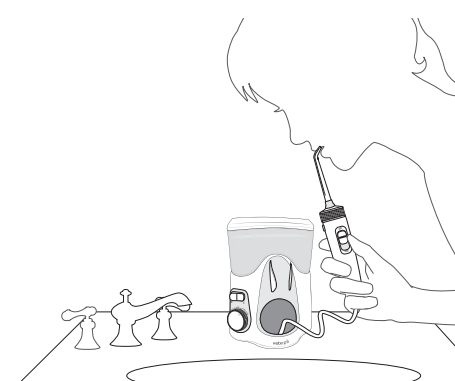
WATER FLOSS

- Place tip in mouth. Start on low pressure. Turn power ON (I). Turn water ON (I) and increase pressure to your liking.

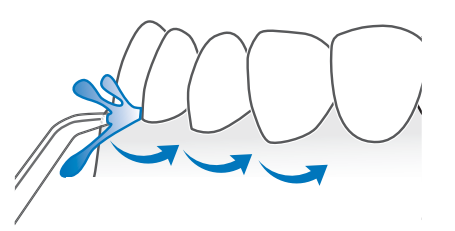


TECHNIQUE

- Lean over sink. Close lips enough to prevent splashing, while still allowing water to flow from mouth into sink.



- Aim water at the gumline at a 90 degree angle. Follow the gumline and pause briefly between teeth.



TO AVOID MESS: KEEP TIP IN MOUTH WHILE UNIT IS ON.

Replacement Tips:

Orthodontic Tip (OD-100E)
Replace every 3 months

Pik Pocket™ Tip (PP-100E)
Replace every 3 months

Plaque Seeker™ Tip (PS-100E)
Replace every 3 months

Classic Jet Tip (JT-100E)
Replace every 6 months

Tongue Cleaner (TC-100E)
Replace every 6 months

Implant Denture Tip (DT-100E)
Replace every 6 months

Full line of replacement parts and accessories may be purchased online at www.waterpik.com or by phone from Water Pik, Inc. at 1-800-525-2774.

Have Questions or Need More Information?

- FULL INSTRUCTION MANUAL (INCLUDING SPANISH)
- CLEANING
- TIPS
- TROUBLESHOOTING
- COMMON QUESTIONS
- HOW-TO VIDEO
- PRODUCT REGISTRATION
- PRODUCT SUPPORT



waterpik.com/ultra

SERVICE MAINTENANCE

Waterpik™ Water Flosser and toothbrushes have no consumer serviceable electrical items and do not require routine service maintenance. For all accessories go to www.waterpik.com. You may also call our toll-free customer service number at 1-800-525-2774 (USA). Refer to the serial and model numbers in all correspondence. These numbers are located on the bottom of your unit.

Still have questions? Go to www.waterpik.com.

USING MOUTHWASH AND OTHER SOLUTIONS/CLEANING

Your Waterpik™ Water Flosser can be used to deliver mouthwash and antibacterial solutions. After using any special solution, rinse unit to prevent clogging by partially filling reservoir with warm water and running unit with tip pointed into sink until unit is empty.

Never immerse unit in water. Before cleaning, unplug from the electrical outlet. Clean the product when necessary by using a soft cloth and mild non-abrasive cleanser.

The water reservoir is removable for easy cleaning and is top rack dishwasher safe, heat cycle OFF.

It is recommended that the reservoir is removed and cleaned weekly.

Using abrasive or chemical cleaners may damage the plastic housing of this product.

REMOVING HARD WATER DEPOSITS/ GENERAL CLEANING

Hard water deposits may build up in your unit, depending on the mineral content of your water. If left unattended, it can hinder performance. Cleaning internal parts: add 2 tablespoons of white vinegar to a full reservoir of warm water. Point the handle and tip into sink. Turn unit ON (I) and run until reservoir is empty. Rinse by repeating with a full reservoir of clean warm water.

This process should be done every 1 to 3 months to ensure optimal performance.

waterpik

Water Pik, Inc., a subsidiary of Church & Dwight Co., Inc.
1730 East Prospect Road
Fort Collins, CO 80553-0001 USA
800-525-2774
www.waterpik.com

Designed and Tested in the USA.

Form No. 20032258-F AB
©2024 Water Pik, Inc.



Call: 1-800-525-2774 (USA) Monday-Friday 7 am - 5 pm MST
Chat or E-mail
service@waterpik.com

CONNECT WITH US @WATERPIK



Call: 1-800-525-2774
www.waterpik.com